

# Healthcare:



# Healthcare: General

Agency	Serving/ Service	Hours	Disability Access	Application Process	Fees	Documents Required
<p><b>Davis Regional Medical Center</b> 218 Mocksville Road Statesville, NC 28625 704-873-0281 davisregional.com</p>	<p>Serving all Available for all medical needs/ emergencies</p>	24/7	Yes	N/A	<p>Varies Depends on service provided</p>	Varies
<p><b>HealthReach</b> 400 E.Statesville Avenue  Mooresville, NC 28115 704-663-1992 healthreachclinic.org</p>	<p>Serving ages 18-65 Free clinic and pharmacy Provides doctor's appointments, medications, labs, mental health care, social work and referrals for specialty care</p>	<p>Mon, Wed, Thurs 9 a.m.-4 p.m. Tues 9 a.m.- 7:30 p.m.</p>	Yes	<p>Yes Online application or call or visit their office</p>	None	<p>Proof of address in Iredell Co. Earn less than 300% of Federal Poverty Guidelines and have no health insurance of any kind</p>
<p><b>Iredell County Health Department</b> 610 E.Center Avenue  Mooresville, NC 28115 704-664-5281 www.co.iredell.nc.us/161/ health-department</p>	<p>Serving all ages Provides immunizations, WIC services, and STD testing and treatments. Additional services available at the Statesville office.</p>	<p>Mon-Wed 8 a.m.- 5 p.m. Thurs 8 a.m.-6 p.m. Fri 8 a.m.-5 p.m.</p>	Yes	Varies	Varies	<p>For WIC - proof of eligibility for Medicaid or proof of income for household, proof of residence No documents needed for immunizations or STD services</p>
<p><b>Iredell County Health Dept. Dental Clinic</b> 318 Turnersburg Highway Statesville, NC 28625 704-878-5440</p>	<p>Serving children and adults in Iredell County by providing basic dental services</p>	<p>Mon-Fri 8 a.m.- 4:30 p.m.</p>	Yes		<p>Fees - sliding scale</p>	

Agency	Serving/ Service	Hours	Disability Access	Application Process	Fees	Documents Required
<b>Iredell Memorial Hospital</b> 557 Brookdale Drive Statesville, NC 28625 704-873-5661 iredellhealth.org	Serving all  Available for all medical needs/ emergencies	24/7	Yes	N/A	Varies  Depends on service provided	Varies
<b>Iredell Urgent Care</b> 653 Bluefield Rd. Suite A Mooresville, NC 28117 704-360-6500 iredellurgentcare.com	Serving all  Check website for available treatments and services	24/7	Yes	N/A	Varies  Depends on service provided	Varies
<b>Kintegra Healthcare</b> 704-874-3316 Kintegra.org	Serving all	8 a.m. - 5 p.m. with after hours nurse advice line	Yes	Call to make appointment	Fees - sliding scale	Varies
<b>Lake Norman Regional Medical Center</b> 171 Fairview Road Mooresville, NC 28117 704-660-4000 lnrmc.com	Serving all  Available for all medical needs/ emergencies	24/7	Yes	N/A	Varies  Depends on service provided	Varies
<b>NC Health Choice</b> 549 Eastside Drive Statesville, NC 28625 704-873-5631 co.iredell.nc.us/299/ Social-Services	Serving those meeting income and resource limits. Uninsured children whose families do not qualify for Medicaid.  Health insurance for uninsured children whose families do not qualify for Medicaid	Mon-Fri 8 a.m. - 5 p.m.	Yes	Walk in, call to have application mailed, or apply online at: epass.nc.gov	Varies	Proof of income, proof of household resources, proof of monthly expenses, names and Social Security numbers for all in household

# Notes

*“Be yourself; everyone else is already taken.” - Oscar Wilde*

# Healthcare: Behavioral &



# Healthcare: Behavioral & Substance Use

**Addictions.com Rehab Locator**  
addictions.com/rehabs/north-carolina/

**American Foundation  
for Suicide Prevention**  
800-273-TALK  
AFSP.org

**Center for Emotional Health**  
146 Medical Park Road #106  
Mooresville, NC 28117  
704-237-4240  
cehcharlotte.com

**DACI**  
207 S. Broad Street  
Mooresville, NC 28115  
704-978-8814  
daciredell.org

**Daymark Recovery**  
518 Signal Hill Road Ext.  
Statesville, NC 28625  
704-873-1239

**Eleanor Health**  
123 Professional Park Drive, Ste 101  
Mooresville, NC 28117  
704-799-0202  
mooresville.nc@eleanorhealth.com

**Greenwood Counseling Center PLLC**  
378 Williamson Road, Suite 207  
Mooresville, NC 28117  
980-246-2787  
greenwoodcounselinglkn.com

**HCC-Mooresville**  
50 Glenwood Drive  
Mooresville, NC 28115  
704-664-7494  
genesishcc.com/mooresville

**Inner Renovations Counseling, PLLC**  
106 Langtree Village Drive, Suite 301  
Mooresville, NC 28117  
980-888-8284  
innerrenovationscounseling.com

**Integrative Wellness Solutions**  
122 Gateway Boulevard, Suite C  
Mooresville, NC 28117  
704-360-3637  
iWSCounseling.com

**Jim Wells/(CPTS)  
Counseling & Play Therapy Service**  
122 Elrosa Road  
Mooresville, NC 28117  
704-840-7005  
counselingandplaytherapyservices.com

**Kintegra**  
1022 Shelton Avenue  
Statesville, NC 28677  
704-874-3316

**A Loving Hand Counseling Service**  
116 South Main Street, Suite 106  
Mooresville, NC 28115  
704-310-5561

**May & Associates Therapy Center**  
862 Brawley School Road, Suite 202  
Mooresville NC 28117  
980-414-8316  
mayfamilytherapy.com

**Miracles Counseling Center**  
111 Kilson Drive, Suite 201  
Mooresville, NC 28117  
704-664-1009  
miraclescounselingcenters.com

**National Suicide Prevention Lifeline**  
988

**NAMI Lake Norman/Iredell**  
PO Box 4112  
Mooresville, NC 28117  
704-236-2264

**Northern Piedmont Counseling**  
125 Overhill Drive, Suite 105  
Mooresville, NC 28117  
npctherapy.com  
980-238-2473

**Partners Behavioral  
Health Management**  
318 Turnersburg Hwy  
Statesville, NC 28677  
1-833-353-2093 (24/7/365)  
partnersbhm.org/crisis-help/

**RJ Wolf Counseling Services**  
125 Overhill Drive, Suite 105  
Mooresville, NC 28117  
407-917-2671

**Rainbow Kidz**  
1325 Mecklenburg Highway  
Mooresville, NC 28115  
704-663-0051

**Vocational Specialty**  
Shadese L Griffith, MSW, LCAS-A  
125 Overhill Drive, Suite 105  
Mooresville, NC 28117  
980-261-3707

**Southern Family Medicine, Inc**  
919 N. Main Street  
Mooresville, NC 28115  
704-360-8486  
southernfamilymedicine.org

**Thrive Counseling**  
311 Williamson Road, Suite 103  
Mooresville NC 28117  
704-360-3049  
lknthrive.com

**Turning Point Family Services**  
919 N.Main Street  
Mooresville, NC 28115  
704-994-5460  
turningpointfamilyservices.org

**Willow Equine**  
Mooresville, NC 28115  
willow-equine.com  
704-237-0644

**Wings of Freedom**  
153 N.Main Street  
Mooresville, NC 28115

# Healthcare: Intellectual & Developmental



# Healthcare: Intellectual & Developmental Disabilities

Agency	Serving/ Service	Hours	Disability Access	Application Process	Fees	Documents Required
<b>Abound Health</b> 322 East Statesville Ave Mooresville NC 28115 704-664-5363 aboundhealth.com	Serving adults and children with disabilities  Respite and community service networking	Varies	Yes	Call for information	Paid through state/ federal programs	Call for more information
<b>Autism360</b> 2329 East WT Harris Boulevard Charlotte, NC 28213 704-529-9090 autism-360-com	Serving adults and children with disabilities  ABA therapy	Mon-Fri  By appointment	Yes	No registration required	Varies	Health insurance and a copy of ASD diagnosis report
<b>Autism Society of NC</b> 8307 University Executive Park Drive #231 Charlotte, NC 28262 704-894-9678 autismsociety-nc.org/	Serving individuals with autism and their families  Advocacy, education, community resource	Varies	Yes	Call for information	Varies	Depends on program  Call for more information
<b>Easter Seals</b> 8430 Neducak Plaza Drive Charlotte, NC 28262 704-881-3760 easterseals.com	Serving adults and children with disabilities  Autism services, mental health, innovations	Varies	N/A	Call or visit website for more information	Varies	Call for more information
<b>Edge of the Playground</b> 336-575-5731 info@edgeoftheplayground.com	Serving those with Autism  Provides strategies for people navigating autism through speaking engagements and workshop events	Varies  By appointment	N/A	N/A	Varies	Call for more information



Agency	Serving/ Service	Hours	Disability Access	Application Process	Fees	Documents Required
<b>ICats Transit System</b> 2611 Ebony Circle Statesville, NC 28625 704-873-9393 ext 3779 co.iredell.nc.us/413	Serving everyone Transportation	Mon-Fri 8 a.m. - 5 p.m.	Yes Specify when requesting	Call for more information	Varies	Depends on program Call for more information
<b>Iredell County DSS</b> 549 Eastside Drive Statesville, NC 28625 704-878-5096 co.iredell.nc.us/299/ Social-Services	Serving low income, disabled and seniors Foster and adoption resources	Mon-Fri 8 a.m. - 5 p.m.	Yes	Call for information	Varies	Proof of income
<b>Lake Norman Special Olympics</b> PO Box 1455 Mooresville, NC 28115 <i>Attention: Special Olympics/ Therapeutic Recreation</i> 704-799-4179 sonc.net	Serving age 2- adulthood Athletic and socialization opportunities for individuals with disabilities	Varies	Yes	Call or email Lakenorman @sonc.net Must have a participation packet on file	None	Athlete participation packet
<b>Learning Partners of Louisburg College</b> 919-497-3302 louisburg.edu/academics/ learning-resources/ learning-partners/	Serving adults with disabilities who have left high school Education	Varies	Yes	Email rfaulkner@ louisburg. edu for more information	College tuition prices	Teacher forms, application for admissions, IEP or 504, psych evaluation
<b>Life Alliance LLC Iredell Office</b> 924 Davie Avenue Statesville, NC 28677 704-872-8335 844-866-8335 lifealliancellc.com	Serving older adults or disabled. Advocacy, education, community recreation	Mon-Fri By appointment only	Yes	Call for information	None	None

# Healthcare: Intellectual & Developmental Disabilities

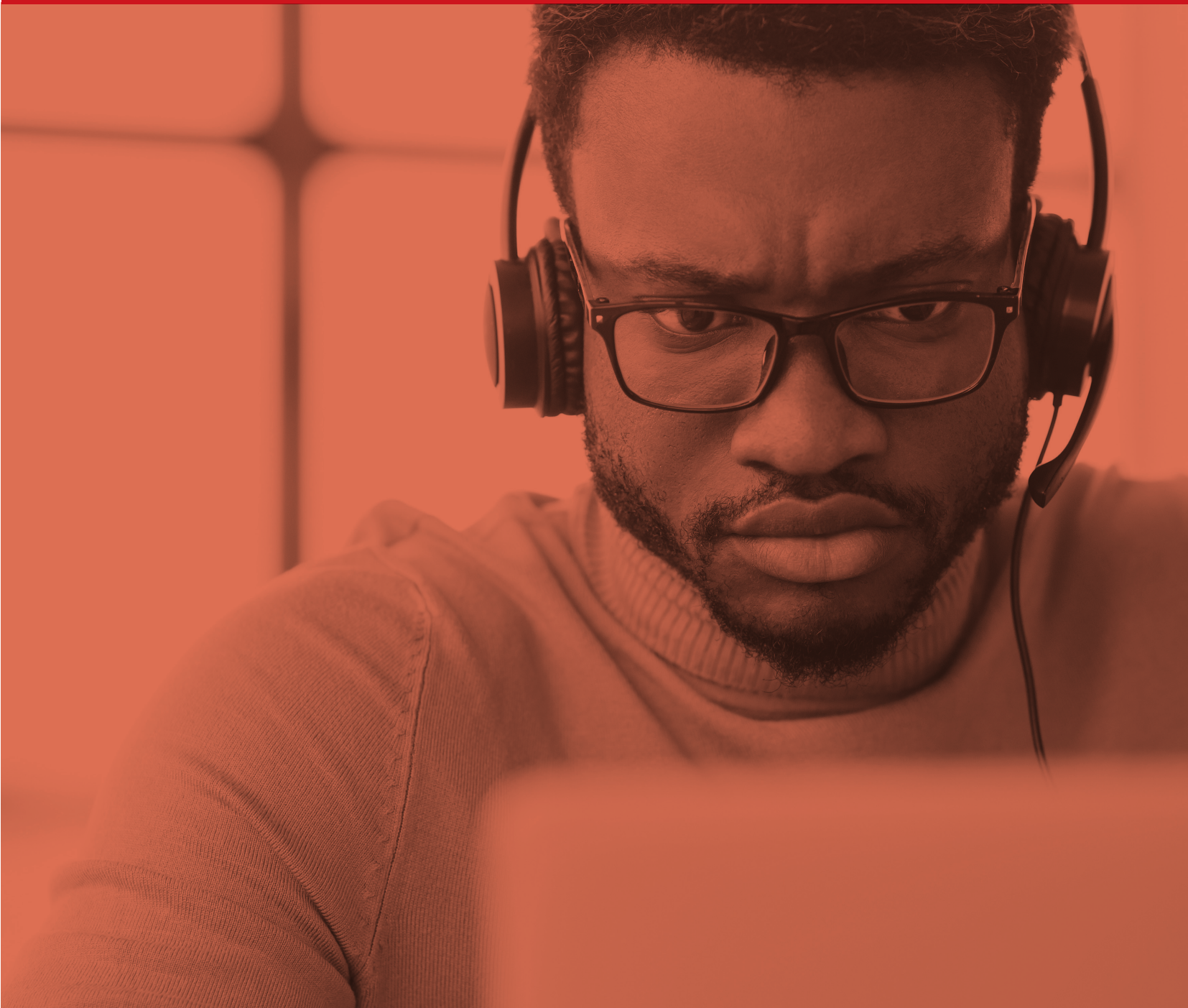
Agency	Serving/ Service	Hours	Disability Access	Application Process	Fees	Documents Required
<b>Lifespan</b> 143 Iredell Avenue Mooresville, NC 28115 704-873-5646 lifespanservices.org	Serving adults and children with disabilities  Community living supports	Mon-Fri 7:30 a.m. - 4 p.m.	Yes	No registration required	None	Medicaid, IEP
<b>Mitchell Community College</b> 701 W. Front Street Statesville, NC 28677 704-878-3364 mitchellcc.edu	Serving adults with disabilities who have left high school  Community College classes for individuals with disabilities	Varies	Yes	Call for information	None	Registration required  Call for information
<b>NC Division of                      Services for the Blind</b> 5501 Executive Center Drive Suite 102 Charlotte, NC 28212 704-563-4168 ncdhhs.gov	Serving support services for anyone blind, low vision or needing help providing services for blind/low vision  Vocational.	Mon-Fri  By appointment	Yes	Call for information	None	Depends on program  Call for more information
<b>NC Vocational Rehabilitation</b> 2042 Davie Avenue Statesville, NC 28625 704-380-6660 ncdhhs.gov/divisions/dvrs	Serving multiple groups from disabled, homeless, veterans  Advocacy, vocational	Mon-Fri 8 a.m. - 5 p.m.	Yes	Referral preferred, but not required	None	Several step process
<b>Partners Behavioral                      Health Management</b> 318 Turnersburg Highway Statesville, NC 28677 704-928-4599	Case Management of Innovations Waiver and Cap D Services	N/A	N/A  Everthing done by phone	Call for information	None	Call for information

Agency	Serving/ Service	Hours	Disability Access	Application Process	Fees	Documents Required
<p><b>RHA Health Services</b> 219 Le Phillip Court NE Concord, NC 28025 704-872-3257 rhahealthservices.org</p>	<p>Serving adults and children with disabilities  Residential supports, day supports</p>	<p>Varies By appointment</p>	<p>N/A</p>	<p>Call for information</p>	<p>Varies</p>	<p>Call for information</p>
<p><b>Rowan Cabarrus Community College</b> 1333 Jake Alexander Boulevard Salisbury, NC 28146 704-216-3657 rccc.edu</p>	<p>Serving adults with disabilities who have left high school  Community College classes for individuals with disabilities</p>	<p>Mon-Fri Varies by class</p>	<p>Yes</p>	<p>Call for information</p>	<p>Free programs</p>	<p>Registration required Call for information</p>
<p><b>Ryan's Bridge</b> PO Box 2444 Davidson, NC 28036 704-506-6922 ryansbridge.org</p>	<p>Serving young adults (18-25) with disabilities who have left high school  Four 1/2 days a week program for adults</p>	<p>Varies by program</p>	<p>Yes</p>	<p>Call for information</p>	<p>Varies</p>	<p>Call for information</p>
<p><b>Town of Mooresville Parks and Recreation Therapeutic Services</b> PO Box 1455 Mooresville, NC 28115 <i>Attention: Therapeutic Recreation</i> 704-799-4179 moorevillenc.gov</p>	<p>Serving everyone Recreation, community activities</p>	<p>Varies Flexible programming</p>	<p>Yes</p>	<p>Pre-registration required for most events. call 704-663-7026</p>	<p>Varies</p>	<p>Pre-registration required</p>
<p><b>Turning Point Family Services</b> 207 S. Broad Street, Suite 1 Mooresville, NC 28115 704-660-6854 turningpointfamilyservices.org</p>	<p>Counseling, medication management, foster care, day treatment, etc.</p>	<p>Mon-Fri 9 a.m. -5 p.m.</p>	<p>Yes</p>	<p>Varies</p>	<p>Varies</p>	<p>Varies</p>

# Notes

*“The elevator to success is out of order. You’ll have to use the stairs...one step at a time.”  
- Joe Girard*

Healthcare:



# Healthcare: Hotlines

<b>24 Hour Crisis Line</b> 704-872-3403	<b>National Suicide Prevention Lifeline</b> 988
<b>24 Hour Crisis Spanish</b> 704-880-1042	<b>Marijuana Anonymous</b> 800-766-6779
<b>Alcoholics Anonymous</b> 800-839-1686	<b>Missing Children Help Center</b> 800-872-5437
<b>Alcoholics for Christ</b> 800-441-7877	<b>National Association for Children of Alcoholics</b> 888-554-2627
<b>Alcohol Treatment Referral Hotline</b> 800-252-6465	<b>National Child Abuse Hotline</b> 800-422-4453
<b>Child Abuse Hotline/ Department of Social Services</b> 800-342-3720	<b>National Domestic Violence</b> 800-799-SAFE
<b>Child Abuse National Hotline</b> 800-25ABUSE	<b>National Sexual Assault Hotline</b> 800-656-HOPE
<b>Children in Immediate Danger</b> 800-THE.LOST	<b>NC Families United</b> ncfamiliesunited.org
<b>Christian Counselors of Mooresville</b> 704-658-0238	<b>Partners' Behavioral Health Crisis Line</b> 1-833-353-2093
<b>Cocaine Hotline</b> 800-262-2463	<b>Post Abortion Counseling</b> 800-228-0332
<b>Disaster Distress</b> 800-985-5900	<b>Stop it Now!</b> 888-Prevent
<b>Drug Abuse National Hotline</b> 800-662-4357	<b>Suicide Prevention Lifeline</b> 800-273-8255 800-273-TALK Text TALK to 741741
<b>Exploitation of Children</b> 800-843-5678	<b>Suicide Prevention for Non-English Speakers</b> 888-628-9484
<b>Families Anonymous</b> 800-736-9805	<b>US Elder Abuse Hotline</b> 866-363-4276
<b>Greenwood Counseling Center</b> 704-360-3641	<b>Veterans Crisis Line</b> 800-273-8255 Press 1 Text 838255
<b>Hopeline</b> 919-231-4525	

# 988 and the National Suicide Prevention Lifeline

**30**  
Percent

The percent the suicide rate has climbed since 1999

**1 in 5**



people above the age of 12 has a mental health condition

**316**

For every one person that dies by suicide annually, 316 people seriously consider suicide

## Why Do We Need 988?

America is experiencing a mental health crisis. But the crisis is not irreversible.

- The suicide rate has climbed nearly 30% since 1999 – and the rate has increased in 49 out of 50 states over the last decade.
- From 2016-2017 alone, there was a 10% increase in suicides of young people between 15-24 years old in the US.
- Approximately one in five people above the age of 12 has a mental health condition in the US.
- Suicide is the second leading cause of death among young people, and the tenth leading cause of death in the US.
- **More Americans died from mental health crises and substance abuse in 2018 alone than have died in combat in every war combined since World War II.**
- However, suicide is most often preventable. For every person who dies by suicide annually, there are 316 people who seriously consider suicide but do not kill themselves.
- Over 90% of people who attempt suicide go on to live out their lives.

For too long, our system for mental health crisis services has been underfunded and undervalued. We will now meet this challenge with the evidence-based crisis intervention that the 988 crisis line will provide.

## What Is 988?

A direct three-digit line to trained National Suicide Prevention Lifeline counselors will open the door for millions of Americans to seek the help they need, while sending the message to the country that healing, hope, and help are happening every day.

In 2020, the Lifeline received nearly 2.4 million calls. **With an easy to remember and dial number like 988, the Lifeline hopes to reach many more people in emotional crisis.**

A 988 crisis line that is **effectively resourced and promoted** will be able to:

- Connect a person in a mental health crisis to a trained counselor who can address their immediate needs and help connect them to ongoing care.
- Reduce healthcare spending with more cost-effective early intervention.
- Reduce use of law enforcement, public health, and other safety resources.
- Meet the growing need for crisis intervention at scale.
- Help end stigma toward those seeking or accessing mental healthcare.

When you've got a police, fire or rescue emergency, you call 911.

**When you have an urgent mental health need, you'll call 988.**

**V!brant**  
Emotional Health

**RI**  
INTERNATIONAL

**ABHW**

**American Foundation for Suicide Prevention**

**BHL**  
Behavioral Health Link

**CENTERSTONE**

**lines for life**  
Building Hope Every Day

**MHA**  
Mental Health America

**NAMI**  
National Alliance on Mental Illness

**NATIONAL COUNCIL FOR BEHAVIORAL HEALTH**

**AMERICAN ASSOCIATION OF SUICIDOLOGY**

**THE TREVOR PROJECT**  
Saving Young LGBTQ+ Lives

# Notes

*“Never give up, for that is just the place and time that the tide will turn.” – Harriet Beecher Stowe*